

View Point

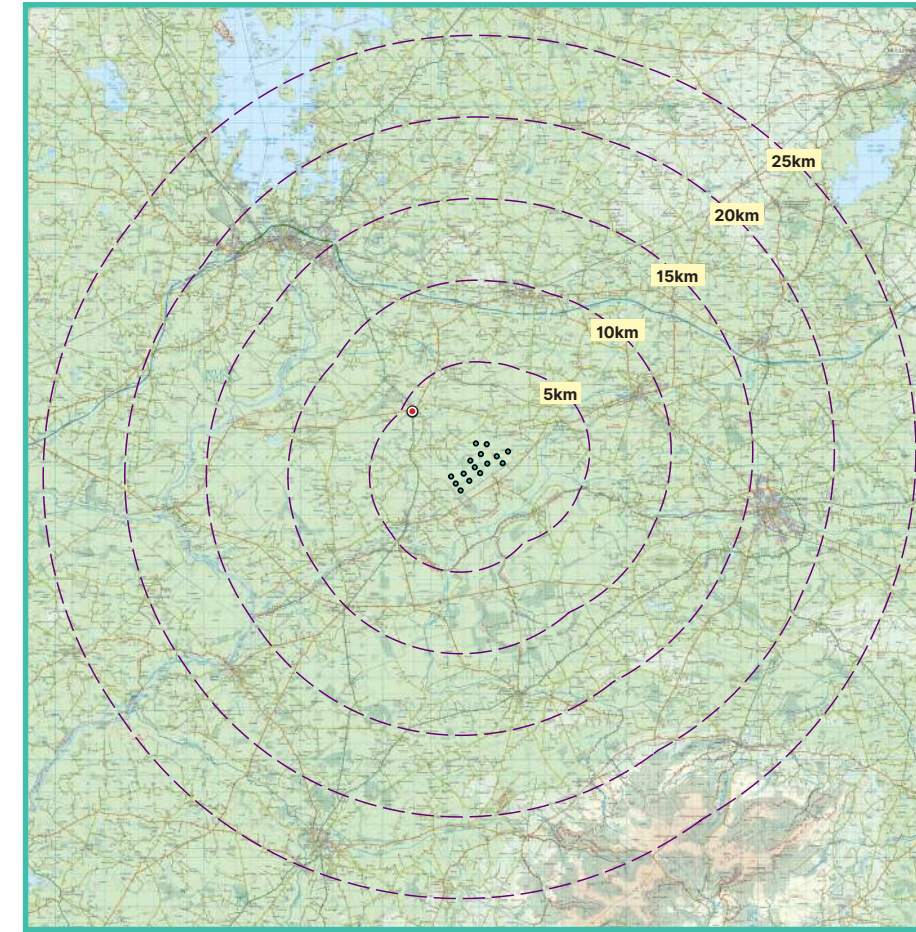
05

Doon Crossroads

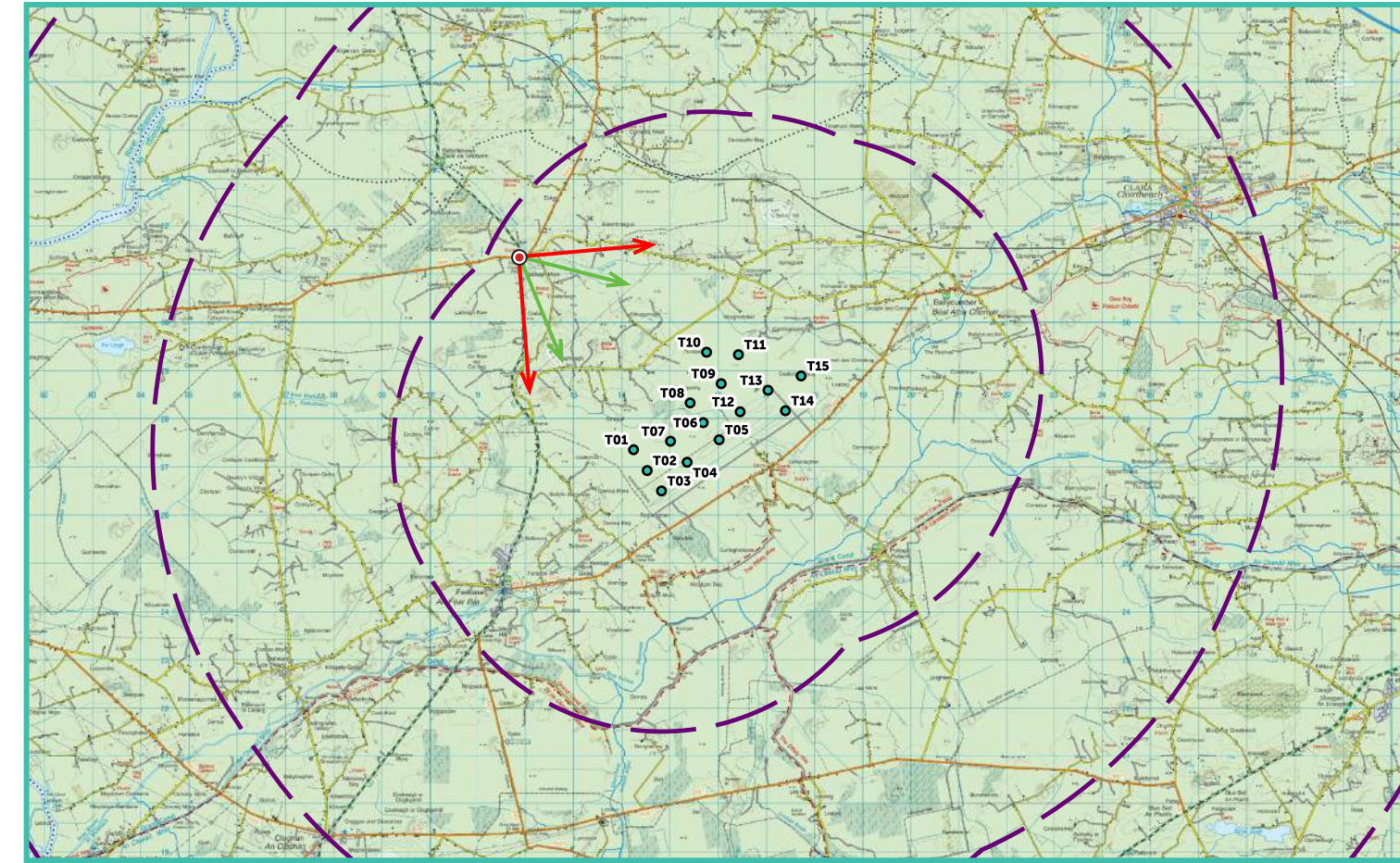
Photomontage 05

View from the N62 National Road, at Doon Crossroads in the townland of Lackagh More, located approximately 4.3km from the nearest proposed turbine (T10). This viewpoint is located on the Pilgrims Road to Clonmacnoise.

View point grid reference	E 611828 N 731385
Date of image taken	2024-07-31
Time of image taken	12:36
View point elevation	52m
Angle of Views	90° / 53.5°
View Direction (Image Centre)	130°
Number of proposed turbines visible	10/15
Turbine Hub Height	145m
Turbine Rotor Diameter	150m
Turbine Tip Height	220m
Montage Type	Type 4+ Photomontage / Photowire /Survey / Scale Verifiable
Camera & Lens	Canon 5D Mark III / Full Frame Sensor with a 50mm Lens
Tripod	Manfrotto 190X extended to approx 1.5m.
Map Licence	©Ordnance Survey Ireland. All rights reserved. Licence number CYAL50267517



View point relative to 25km radius.



View point relative to proposed wind farm site.



Detail of view point location.

Map Legend

- Area shown in 90° view
- Area shown in 53.5° view
- View Point

Wireline Legend

- Proposed Lemanaghan Wind Farm
- Existing Wind Farms
- Permitted Wind Farms
- Proposed Wind Farms
- Proposed Met Mast

Prepared by
MKO
Planning & Environmental Consultants
Tuam Road, Galway.

Tel: (091) 73 56 11
E-mail: info@mkoireland.ie
Website: www.mkoireland.ie



90° View Extent



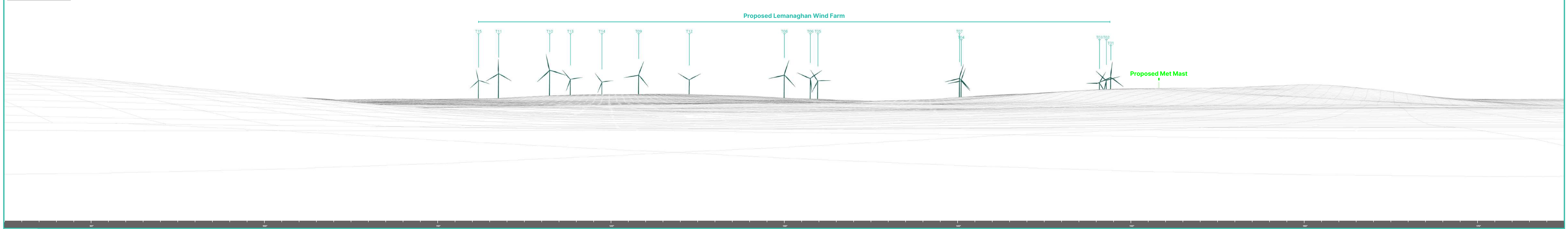
Key Image at 120°

53.5° View Extent





Matching Wireline



Proposed Photomontage with Cumulative at 53.5°



Matching Wireline

Proposed Lemanaghan Wind Farm

